

Instructions for the Fretboard Dresser

This is a fairly simple project for someone possessing basic cabinet making skills. Read and follow all the safety instructions for your power tools. Always wear safety glasses. The only particularly unusual aspect is that the cabinet is not square; the sides lean inwards one degree. This is to suggest the tapered neck of a guitar. Because of this, all the drawers are different widths, getting progressively larger as you go downward. Also, one should note the drawer faces get smaller as they go down, because the space between the frets decreases going down the neck of a guitar. The frets form the handles for the drawers.

What you need:

Materials for 1 Dresser

- 3 sheets of $\frac{3}{4}$ inch thick Hard-rock Maple Melamine, 4 feet by 8 feet, for the case.
- 2 sheets of $\frac{1}{2}$ inch thick Hard-rock Maple Melamine, 4 feet by 8 feet, for the drawers.
- 2 qty. 2" x 3" kiln-dried studs, 8' long, for the frets.
- 1 Pint of Woodworker's Glue
- 1 Pint of Roo Glue
- 1 Quart of denatured alcohol, to clean up the glue.
- 100 qty #6 -1 $\frac{1}{4}$ " Self-tapping wood screws.
- 100 qty # 8 -2" Self-tapping wood screws.
- 1 roll of Polyester iron-on edge-banding, to match Maple Melamine.
- 5 pairs Blum "230" 18" self-closing side-mount drawer slides.
- Contact cement.

Essential Tools:

- A table saw with a good quality melamine blade (high ATB, negative rake, 80 teeth).
- A 16 oz. Hammer
- A 16 ft Tape measure.
- Clothes Iron (to iron on edge tape)
- Sharp $\frac{3}{4}$ " Chisel
- Router with $\frac{1}{4}$ " round over bit
- Kreg Pockethole Jig Kit
- Cordless Drill

What you do:

1) Cut the parts

- a) Cut your case parts from the 2 qty. 3/4" melamine sheet. Here is the cutlist:

Sides 19 1/2 x 60 (2qty)
 Top 18 3/4 x 29 3/16
 Bottom 18 3/4 x 31 11/32
 Back 32 x 60 (cut this to fit after assembling the top, bottom, and sides)

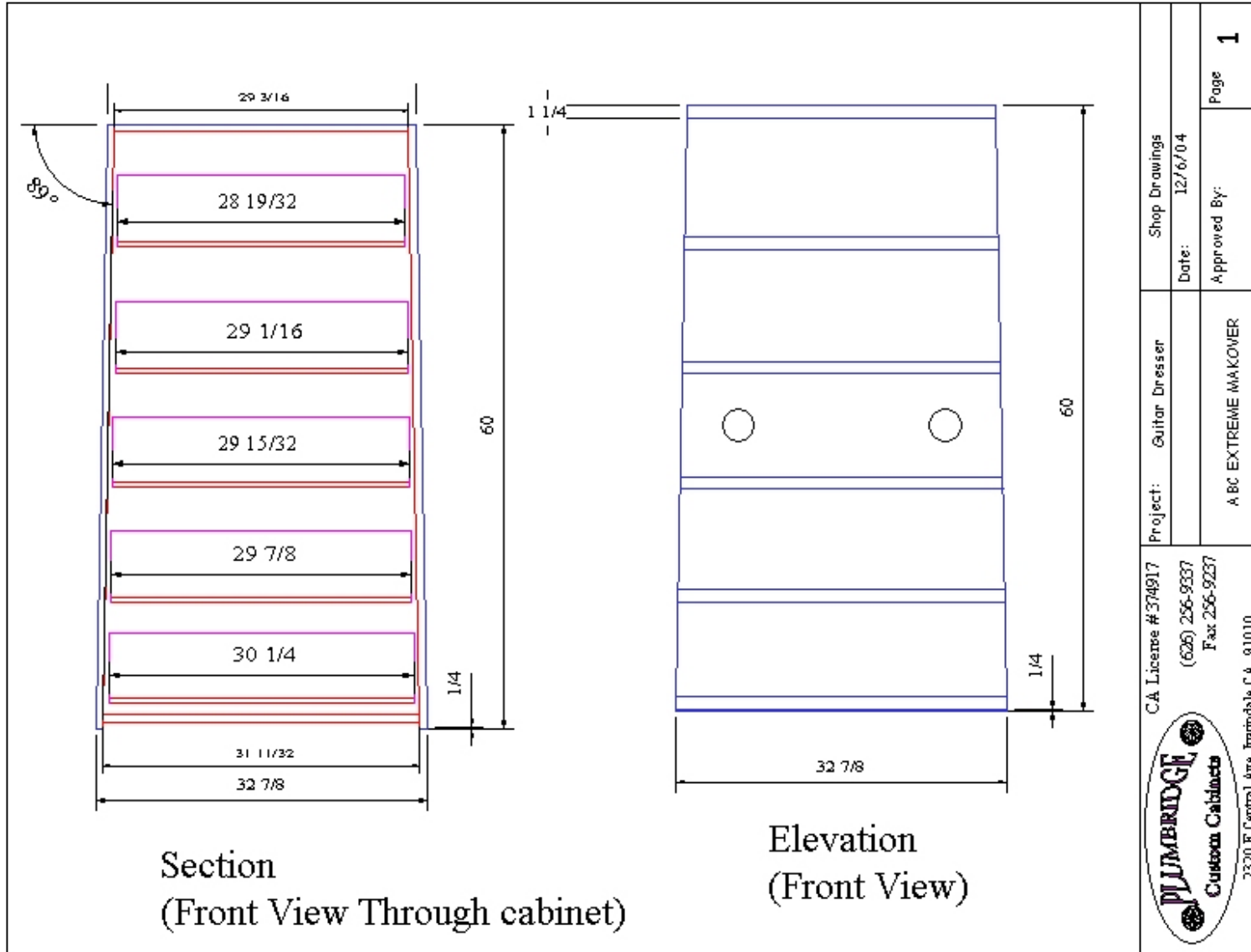
Notice that the left and right edges of the top and bottom pieces need to be cut at 89°, not 90°. The top of the side pieces should be cut at 89° as well.

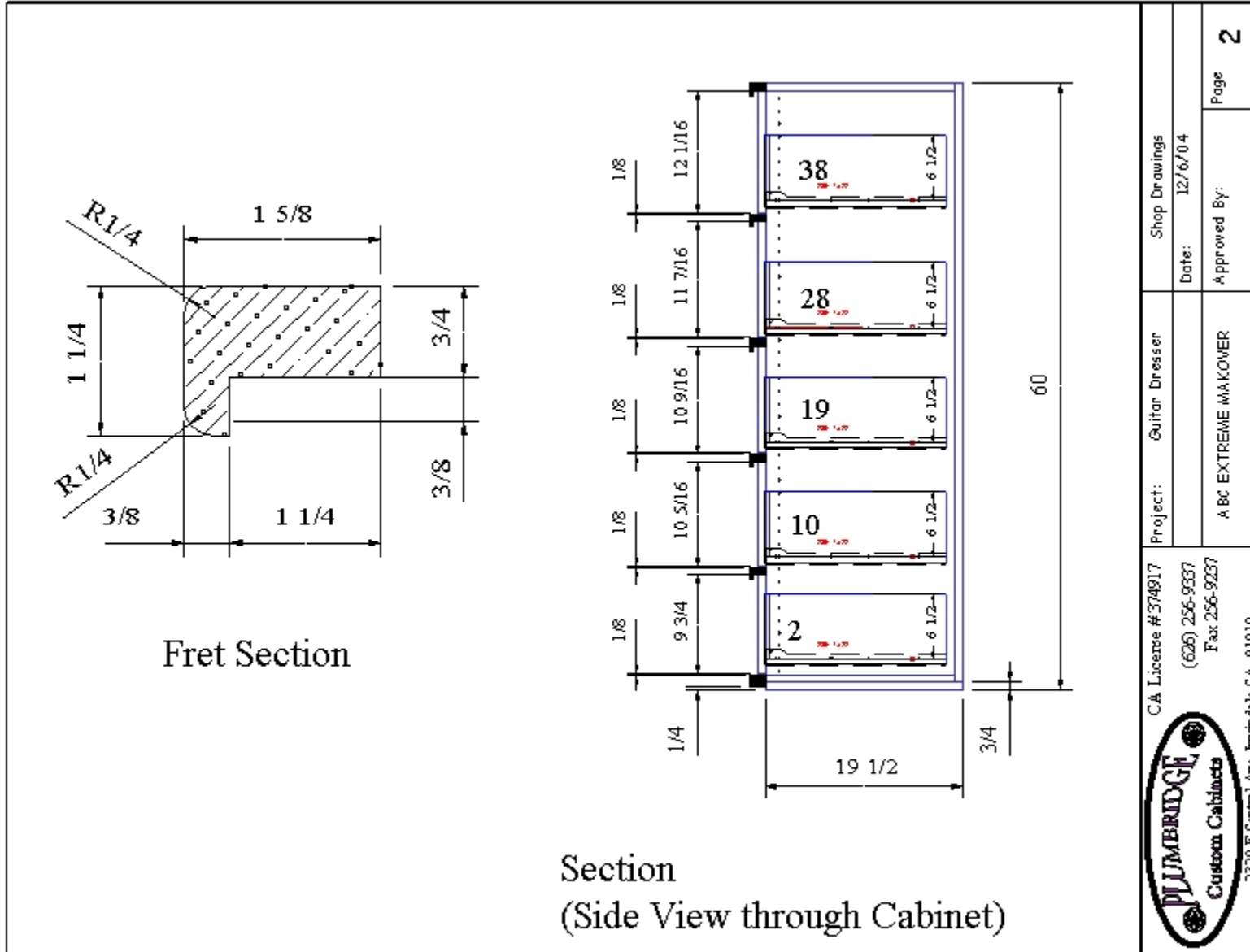
- b) Edgeband all exposed edges. Make pocket screw holes in the top, bottom and back, from the interior side, of course.
- c) Assemble the case, using pocket screws, following the plans.
- d) With your tape measure, layout the locations for the drawer faces and frets on the side of the cabinet (with a pencil).
- e) Install the drawer guides in the sides of the cabinet, being sure the guides are in the right location.
- f) Since the sides of this cabinet are leaning inwards, each drawer is a different width! Measure the width across the inside of the cabinet at each drawer guide, and deduct one inch. This is the width of the drawer bottom. All five bottoms are different! Deduct one more inch, this is the width of the front and back for that drawer. All the sides are 18" long, all the bottoms are 18" wide. ***Adjust the cutlist dimensions according to these calculations.*** Here is the cutlist:

Sides (10 qty) 6 x 18
 Front of #1 drawer 6 x 27 9/16
 Back of #1 drawer 6 x 27 9/16
 Bottom of #1 drawer 6 x 28 9/16
 Front of #2 drawer 6 x 28 1/16
 Back of #2 drawer 6 x 28 1/16
 Bottom of #2 drawer 6 x 29 1/16
 Front of #3 drawer 6 x 28 15/16
 Back of #3 drawer 6 x 28 15/16
 Bottom of #3 drawer 6 x 29 15/16
 Front of #4 drawer 6 x 28 7/8
 Back of #4 drawer 6 x 28 7/8
 Bottom of #4 drawer 6 x 29 7/8
 Front of #5 drawer 6 x 29 1/4
 Back of #5 drawer 6 x 29 1/4
 Bottom of #5 drawer 6 x 30 1/4

Cut your drawer parts from the 2 qty. 1/2" melamine sheet.

-
- g) Assemble the drawers, attach the runners. The sides are to sit on top of the drawer bottom, not rabbitted in. Attach the drawer guides to the drawers.
 - h) Make five frets, 33" long on the table saw. A section of the frets is in the plans.
 - i) Cut your top drawer face, and fit it carefully. Edgeband the sides and bottom. Cut one fret to length and attach it, with 3 screws, to the top of the drawerface. Finally, attach the drawer face to the drawer with 2 screws from the back. Repeat this for each drawer, working your way down. Notice the bottom drawer has an extra fret attached to its bottom.
 - j) Remove the frets and paint them black, then re-attach them.
 - k) Make 2 dots five inches in diameter. Attach them with some contact cement.





CA License # 374917 (626) 256-9337 Fax 256-9237 PLUMBRIDGE Custom Cabinets 2320 E. Central Ave., Irwindale, CA. 91010	Project: Guitar Dresser	Shop Drawings
	Date: 12/6/04	Approved By:
ABC EXTREME MAKEOVER		Page 2